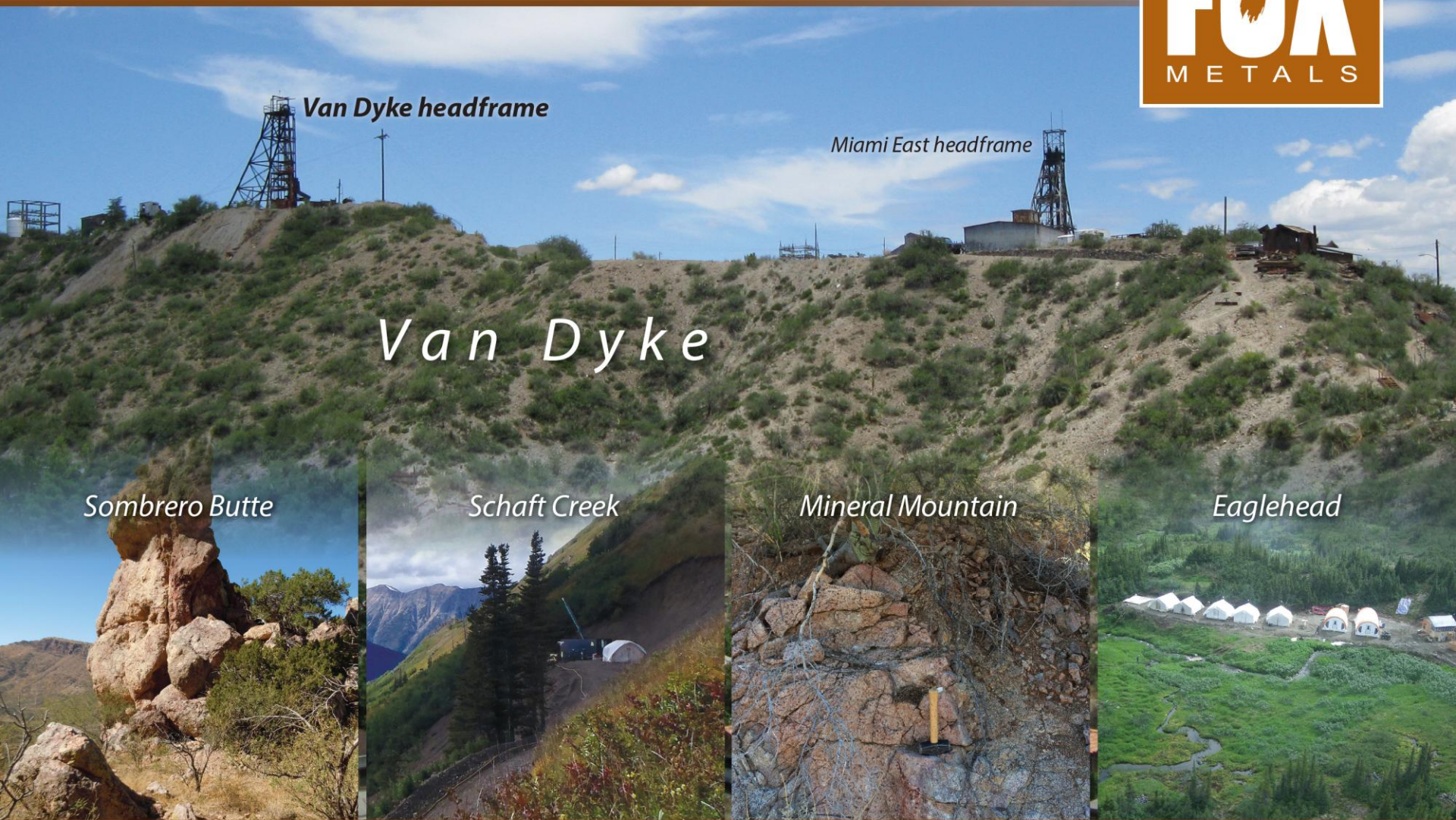


2026 Annual General Meeting



Van Dyke headframe

Miami East headframe

Van Dyke

Sombrero Butte

Schaft Creek

Mineral Mountain

Eaglehead

Forward Looking Statements



This Power Point presentation contains certain forward-looking statements within the meaning of the Section 27A of the Securities Act of 1933 and Section 21E of the Securities Exchange Act of 1934, and forward-looking information within the meaning of the Canadian securities laws (collectively, “forward-looking information”). This forward-looking information includes statements relating to management’s expectations with respect to our projects based on the beliefs, estimates and opinions of the Company’s management or its independent professional consultants on the date the statements are made.

Forward-looking information in this presentation includes statements about the potential growth and exploration of Copper Fox’s investments; expected supply and demand for copper in the years to come; the copper refined balance forecast; potential economic enhancements to the Schaft Creek and Van Dyke projects; the future activities of the Schaft Creek Joint Venture; direct cash payments to Copper Fox upon a Production Decision and upon the completion date of a mine; and the interpretation of data from the Van Dyke, Eaglehead, Sombrero Butte and Mineral Mountain projects. Information concerning exploration results and mineral resource estimates may also be deemed to be forward-looking statements, as it constitutes a prediction of what might be found to be present when and if a project is actually developed.

With respect to the forward-looking statements contained in this presentation, Copper Fox has made numerous assumptions regarding, among other things: metal price assumptions used in mineral reserve estimates; the continued availability of project financing; the geological, metallurgical, engineering, financial, and economic advice that Copper Fox has received is reliable, and is based upon practices and methodologies which are consistent with industry standards; the availability of necessary permits; and the stability of environmental, economic, and market conditions. While Copper Fox considers these assumptions to be reasonable, these assumptions are inherently subject to significant business, economic, competitive, market and social uncertainties and contingencies.

Additionally, there are known and unknown risk factors which could cause Copper Fox’s actual results, performance or achievements to be materially different from any future results, performance or achievements expressed or implied by the forward-looking information contained herein. Known risk factors include, without limitation: uncertainties related to raising sufficient financing to fund the planned work in a timely manner and on acceptable terms; changes in planned work resulting from logistical, technical or other factors; the possibility that results of work will not fulfill projections/expectations and realize the perceived potential of Copper Fox’s projects; the Schaft Creek Joint Venture may not result in a Production Decision being made, or the construction of a mine; financing commitments may not be sufficient to advance the Schaft Creek project as expected, or at all; uncertainties involved in the interpretation of drilling results and other tests and the estimation of mineral resources; the possibility that there may be no economically viable mineral resources may be discovered on any of Copper Fox’s projects; risk of accidents, labour disputes or other unanticipated difficulties or interruptions; the possibility of environmental issues at Copper Fox’s projects; the possibility of cost overruns or unanticipated expenses in work programs; the need to obtain permits and comply with environmental laws and regulations and other government; ongoing relations with our partners and joint ventures; performance by contractors of their contractual obligations; unanticipated developments in the supply, demand, and prices for metals; changes in interest or currency exchange rates; legal disputes; and changes in general economic conditions or conditions in the financial markets.

A more complete discussion of the risks and uncertainties facing Copper Fox is disclosed in Copper Fox’s continuous disclosure filings with Canadian securities regulatory authorities at www.sedarplus.ca. All forward-looking information herein is qualified in its entirety by this cautionary statement, and Copper Fox disclaims any obligation to revise or update any such forward-looking information or to publicly announce the result of any revisions to any of the forward-looking information contained herein to reflect future results, events or developments, except as required by law except as may be required under applicable securities laws. All figures are in Canadian Dollars unless otherwise indicated.

Elmer B. Stewart, MSc., P.Geo., President and CEO of Copper Fox, is the Company’s non-independent nominated Qualified Person pursuant to Section 3.1 of National Instrument 43-101, *Standards for Disclosure for Mineral Projects*, and has reviewed and approved the technical information disclosed in this presentation.

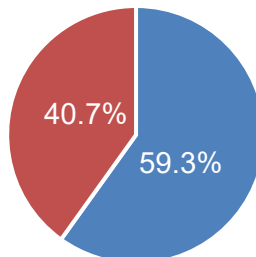
Capital Structure, Management & Directors



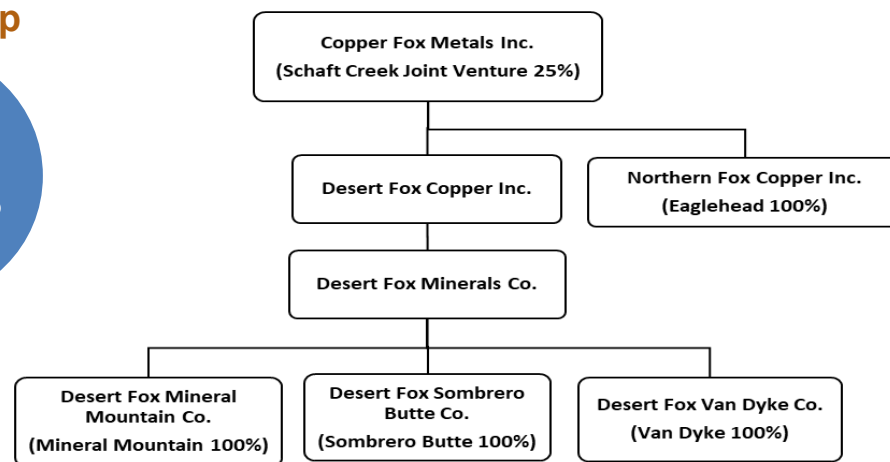
Capital Structure

Market Capitalization (M)	C\$348
Shares Outstanding (M)	586.2
Warrants (M)	Nil
Fully Diluted Shares (M)	586.2
Insider Ownership	347.6
Cash (M)	C\$0.9
Debt	Nil

Ownership



■ Insiders
■ Retail



Management



Elmer B. Stewart, MSc., P.Geo., President & Chief Executive Officer

Elmer has over 45 years of domestic and international experience in mining and exploration for gold, uranium, and base metals. Elmer was directly involved with negotiating the Schaft Creek Joint Venture Agreement with Teck Resources Limited and instrumental in diversifying the Company's project portfolio by acquiring the Van Dyke and Sombrero Butte copper projects in Arizona. Elmer worked to advance the Van Dyke project from an exploration to an advanced stage project, recognized the mineral potential of the area comprising the Mineral Mountain project and negotiated the acquisition of the Eaglehead porphyry copper project.



Mark T. Brown, B.Comm., CPA, CA, Chief Financial Officer

Mark is the President of Pacific Opportunity Capital Ltd., headquartered in Vancouver, BC. Pacific Opportunity is a financial consulting and merchant banking firm active in venture capital markets in North America. Mark brings over 25 years of executive management experience in the mining sector to the company. His corporate activities include merger and acquisition transactions, financing, strategic corporate planning, and corporate development. Mark received a Bachelor of Commerce Degree from the University of British Columbia in 1990 and is a member of the Institute of Chartered Accountants of British Columbia.



Lynn Ball, Vice President Corporate Affairs

Lynn has been involved in the mineral exploration industry since joining Copper Fox Metals in 2005 providing a variety of administrative and corporate support. Lynn reports directly to the CEO and CFO of the Company and her experience includes management of corporate and financial reporting requirements, maintaining mineral tenures, engaging with project stakeholders and shareholders while ensuring strong ESG policies are in place.

Directors Elmer B. Stewart (Chair), Mark T. Brown, Ernesto Echavarria, Manuel Gomez, R. Hector MacKay-Dunn

Copper Outlook

Copper is essential for transitioning to a low-carbon economy and powering AI technologies

Copper supply needs to increase from 27Mt to 43Mt by 2035 to achieve 2050 net-zero targets¹



Price Volatility

- Global economic uncertainty
- Supply disruption – hoarding
- World growth – Asia and India industrialization

Demand Factors

- Renewable energy
- Infrastructure
- AI technologies
- Electric vehicles

Supply Factors

- Mature mine supply
- Declining head grades/higher operating costs
- Low inventory of development stage copper projects

1) Wood Mackenzie October 21, 2025

Company Overview



- Growth oriented copper exploration/development company, focused on large, porphyry copper projects in Canada and the United States
- Four operated projects and 25% interest in Schaft Creek Joint Venture with Teck Resources Limited (75%)
- 2021 preliminary economic assessments (PEAs) on the Schaft Creek (25%) and Van Dyke (100%) projects yielded a combined after-tax NPV of **US\$855M¹**
- Three projects with mineral resource estimates (MREs) containing metal balances of:
 - 3.0 Blb Cu in Measured and Indicated categories (4.4 Blb CuEq²)***
 - 2.3 Blb Cu in Inferred category (3.0 Blb CuEq²)***
- Strong ESG philosophy; key components to responsible mineral development
- Current activities
 - Updated PEA for Van Dyke ISCR project
 - Maiden drilling program underway at Mineral Mountain
 - Permitting future work programs for Eaglehead and Sombrero Butte projects

1) PEAs are preliminary in nature and include inferred mineral resources that are considered too speculative geologically to have the economic considerations applied to them that would enable them to be categorized as mineral reserves, and there is no certainty that the results of the PEAs will be realized.

2) CuEq Factors: Metal price Cu US\$3.50/lb, Mo US\$20.00/lb, Au US\$1750/oz, Ag US\$20/oz. Metal recoveries Schaft Creek - Cu 100%, Mo 60%, Au 71%, 43% Ag, Eaglehead - Cu 100%, Mo 72%, Au 78%, Ag 78%.

Project Portfolio & Mineral Resources

Schaft Creek (25%)

Advanced Stage porphyry Cu-Mo-Au-Ag project located 60 km south of Telegraph Creek, British Columbia.

Van Dyke (100%)

Advanced Stage in-situ copper recovery (ISCR) project located in Miami-Globe Mining District, Arizona

Eaglehead (100%)

Advanced Exploration Stage porphyry Cu-Au-Mo-Ag project located 50 km east of Dease Lake, British Columbia

Sombrero Butte (100%)

Exploration Stage porphyry Cu-Mo-Ag project contiguous to the Copper Creek porphyry copper deposit in Arizona

Mineral Mountain (100%)

Exploration Stage porphyry Cu-Mo-Ag project located in a major porphyry copper belt hosting the Santa Cruz & Resolution deposits in Arizona

EAGLEHEAD¹ Cu-Mo-Au-Ag

- 15,713 ha of Mineral Licenses
- 36,605 m of drilling in 126 holes
- Pit Constrained Mineral Resources:
 - Ind:** 70.8 Mt @ 0.22% Cu, 0.011% Mo, 0.06 g/t Au, 0.90 g/t Ag
345 Mlb Cu, 16.9 Mlb Mo, 0.14 Moz Au, 2.15 Moz Ag – **509 Mlb CuEq**
 - Inf:** 242.3 Mt @ 0.19% Cu, 0.004% Mo, 0.04 g/t Au, 0.60 g/t Ag
1.0 Blb Cu, 18.7 Mlb Mo, 0.34 Moz Au, 4.97 Moz Ag – **1.3 Blb CuEq**

SCHAFT CREEK² Cu-Au-Mo-Ag

- 60,268 ha of Mineral Licenses
- 119,143 m of drilling in 474 holes
- Pit Constrained Mineral Resources:
 - M&I:** 1,345.5 Mt @ 0.26% Cu, 0.16 g/t Au, 0.017% Mo, 1.25 g/t Ag
7.8 Blb Cu, 7.0 Moz Au, 510.6 Mlb Mo, 54.3 Moz Ag - **11.6 Blb CuEq**
 - Inf:** 343.6 Mt @ 0.17% Cu, 0.11 g/t Au, 0.013% Mo, 0.84 g/t Ag
1.3 Blb Cu, 1.2 Moz Au, 95.5 Mlb Mo, 9.3 Moz Ag - **2.0 Blb CuEq**

VAN DYKE³ Cu

- 531 ha (1,312.18 acres) of Mineral Rights
- 39,756 m of drilling in 75 holes
- Mineral Resources:
 - Ind:** 97.6 Mt @ 0.33% Cu, containing 717 Mlb - **517 Mlb SCu**
 - Inf:** 168.0 Mt @ 0.27% Cu, containing 1.0 Blb - **699 Mlb SCu**



1, 2 & 3 reference notes for the Mineral Resources stated above are found on page 6.

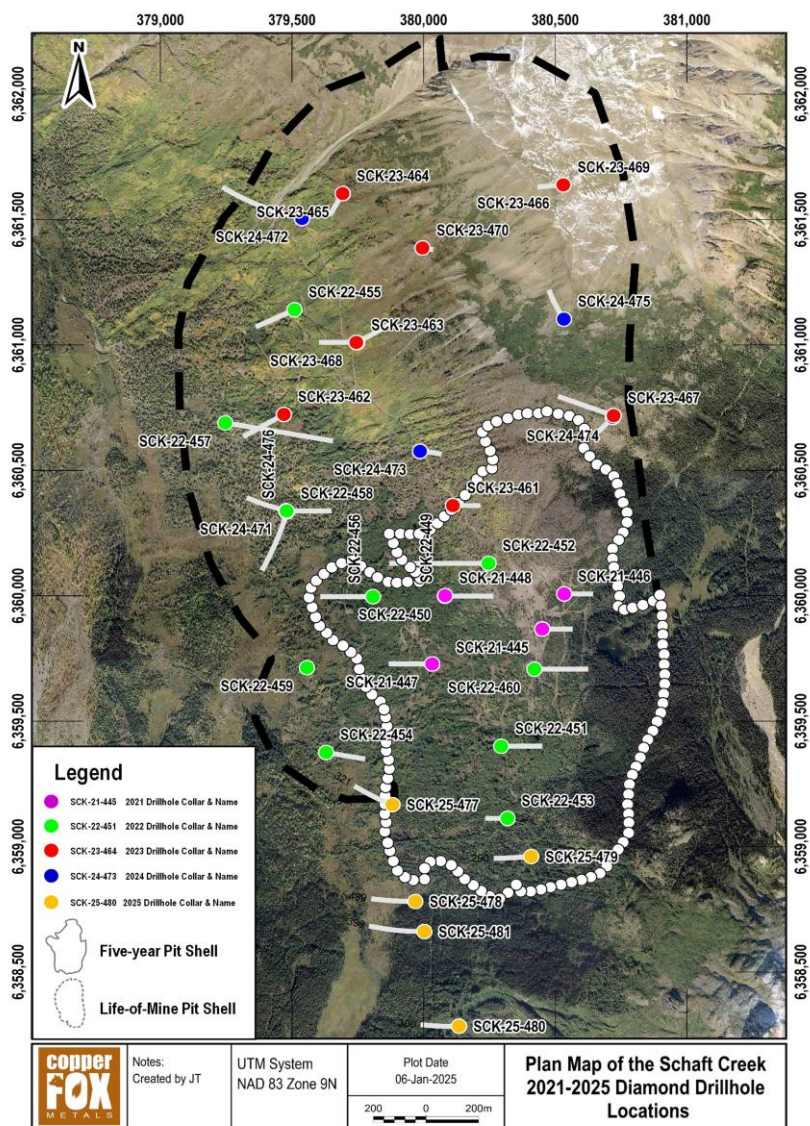
Schaft Creek Joint Venture



- Teck Resources Limited 75% & Operator – Copper Fox 25%
- Teck investment of C\$114M since formation of the joint venture in 2013
- Large undeveloped porphyry copper deposits in North America (getting larger)
- After-tax NPV₈ of US\$842M, an IRR of 12.9%, and a payback period of 4.8 years (100% basis)
- Significant resource expansion potential (2024 & 2025 drill results)
- 2026 budget - C\$9.1M to close out Scoping stage to determine advancing to the PFS stage

1) The Technical Report, titled “Schaft Creek Preliminary Economic Assessment , NI 43-101 Technical Report”, with an effective date of September 10, 2021, was prepared by H. Ghaffari, M.A.Sc., P.Eng., J. Huang, Ph.D., P.Eng., and S. Hafez, Ph.D., P.Eng., of Tetra Tech Canada Inc., M. O'Brien, P.Geo. of Red Pennant Communications Corp., D. Friedman, P.Eng., of Knight Piésold Ltd. and B. Masson, P.Eng., of McElhanney Consulting Services Ltd.

2021-2025 Drill Programs



2021 - 2025 drilling programs to investigate enhancements identified in the 2021 PEA

- 2021 - 2022 geometallurgical drilling to:
 - Better define geometallurgical domains
 - Collect samples for laboratory testwork
 - Enhance metallurgical performance
 - Increase metal recoveries
- 2023 - 2024 geotechnical drilling to:
 - Support pit slope stability modelling
 - Determine variability in rock strength
 - Provide safe working environment within pit
- 2025 drilling:
 - Investigate area designated as potential rock storage facility south of the Liard zone
 - Extended mineralized envelope up to 500m south of Schaft Creek deposit
 - DDH SCK-25-478:
 - 28.50-244.00m averaged 0.283% Cu, 0.005% Mo, 0.04g/t Au, 0.80g/t Ag
 - 357.73-425.00m averaged 0.286% Cu, trace Mo, 1.814g/t Au, 1.77g/t Ag

2025 Schaft Creek Program

Objective – Advance key project parameters to advance the project from the Scoping Study stage to the Pre-Feasibility Study stage



Expenditures of C\$15.3M shared pro rata – funded by Teck, no cash required from Copper Fox, third C\$20M cash payment as per SCJVA reduced accordingly

- *Drill program*
- *Geometallurgical*
- *Geotechnical*
- *Hydrogeology*
- *Climate*
- *Planned infrastructure sites*
- *Environmental baseline*
- *Archaeology*

2026 Schaft Creek Program

Objective – Close out Scoping stage - advance to the Pre-Feasibility stage



- Planned expenditures C\$9.1M shared pro rata – funded by Teck, no cash required from Copper Fox, third C\$20M cash payment as per SCJVA reduced accordingly
- Review and assess key project parameters to meet threshold for a PFS in accordance with industry standards
- Identify possible data gaps to determine if additional studies are required to meet the threshold for a PFS
- BC Hydro System Impact Study to assess energy required to meet operation expectations
- System Impact Study does not interfere with other planned activities at Schaft Creek

Schaft Creek Economics



Production and Cost Summary	Units	2012 FS	2021 PEA
Mine Life	years	21	21
CuEq Metal Production LOM	B/lb	7.6	7.5
Copper Price	US\$/lb	3.25	3.25
Gross Revenue	US\$B	22.6	21.3
Total Cash Costs	US\$M	4,479	3,502
Total LOM Operating Cost	US\$/t	13.20	8.66
C1 Cash Costs (\$/lb payable Cu)	US\$/lb	1.02	1.00
Sustaining Capital	US\$M	1,223	849
All In Sustaining Costs (AISC)	US\$/lb	1.18	1.18
Initial Capital Costs (incl. contingency)	US\$M	3,159	2,653
Taxes	US\$M	1,858	3,775
Cashflow Parameters and Outputs			
Discount Rate	%	8	8
Pre-Tax Net Free Cash Flow	US\$B	5.9	7.4
Pre-Tax NPV	US\$M	498	1,383
Pre-Tax IRR	%	10.1	15.2
Pre-Tax Payback	years	6.5	4.4
After-Tax Net Free Cash Flow	US\$B	4.1	5.4
After-Tax NPV	US\$M	65	842
After-Tax IRR	%	8.3	12.9
After-Tax Payback	years	6.8	4.8

**Base Case 2021 PEA Metal price sensitivities
with all other PEA parameters remaining constant
(Current LT metal price (US\$)
Cu 4.50/lb, Au 3,350 /oz, Mo 22.50/lb Ag 38.00/oz)**

Copper Price (US\$/lb)	2.75	3.00	3.25	3.50	3.75
EBITDA (US\$B)	8.88	9.85	10.81	11.78	12.75
Free Cash Flow (after-tax US\$B)	3.98	4.69	5.39	6.10	6.81
NPV (after-tax US\$B)	0.36	0.60	0.84	1.08	1.32

Each **\$0.25/lb** increase in copper price
Increases EBITDA by **US\$970M**
Increases after-tax Free Cash Flow by **US\$710M**
Increases after tax NPV by **US\$240M**

Gold Price (US\$/oz)	1,300	1,400	1,500	1,600	1,700
EBITDA (US\$B)	10.24	10.53	10.81	11.10	11.39
Free Cash Flow (after-tax US\$B)	4.98	5.19	5.39	5.60	5.81
NPV (after-tax US\$B)	0.69	0.77	0.84	0.92	1.00

Each **\$100/oz** increase in gold price
Increases EBITDA by **US\$290M**
Increases after-tax Free Cash Flow by **US\$210M**
Increases after tax NPV by **US\$80M**

Molybdenum Price (US\$/lb)	8.00	9.00	10.00	11.00	12.00
EBITDA (US\$B)	10.45	10.63	10.81	10.99	11.17
Free Cash Flow (after-tax US\$B)	5.13	5.26	5.39	5.53	5.66
NPV (after-tax US\$B)	0.76	0.80	0.84	0.88	0.92

Each **\$1.00/lb** increase in molybdenum price
Increases EBITDA by **US\$180M**
Increases after-tax Free Cash Flow by **US\$140M**
Increases after tax NPV by **US\$40M**

Schaft Creek Joint Venture – Key Terms

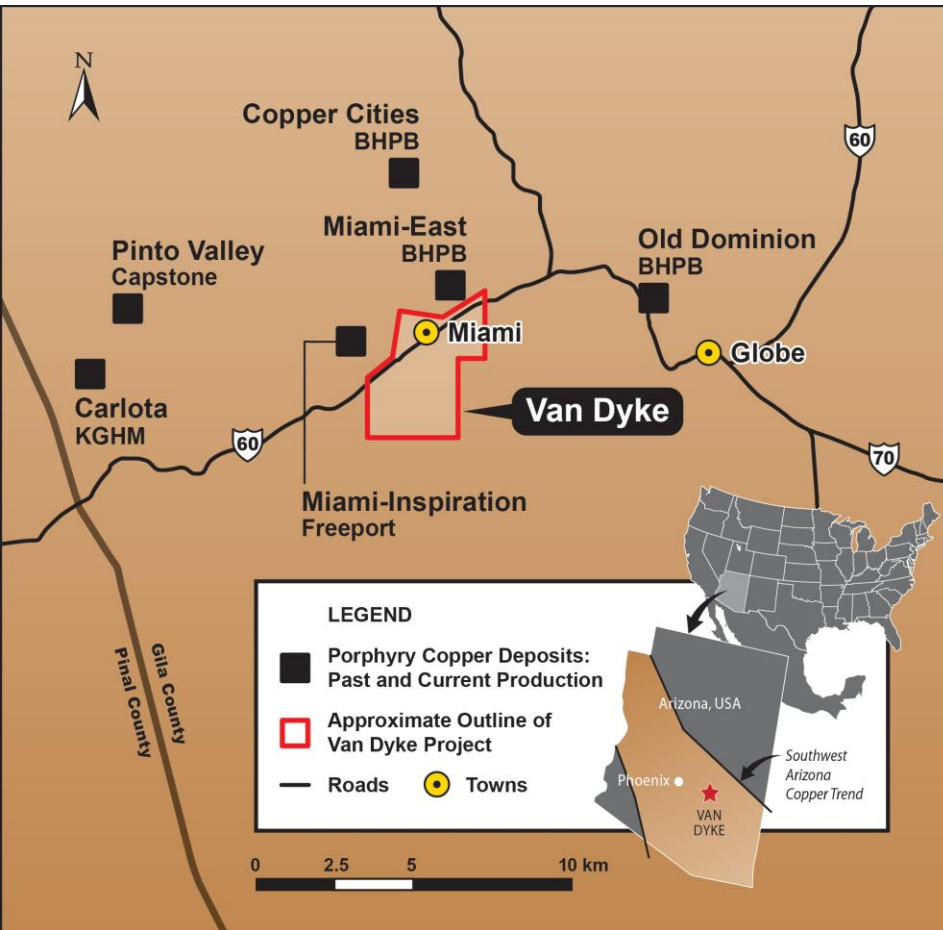


- Teck Resources Limited 75% & Operator - Copper Fox 25%
- Copper Fox to receive C\$60M in Milestone Payments
 - First C\$20M payment on Signing the SCJV Agreement (received)*
 - Second C\$20M payment on Sanctioning Decision*
 - Third C\$20M payment on Completion of Construction of Facilities (reduced to C\$12.5)*
- Teck will fund 100% of Pre-Production Costs up to C\$60M (threshold met in July 2024)
- Pre-Production Costs of ~ C\$90M incurred to December 31, 2025
- Copper Fox's pro rata share of Pre-Production Costs going forward will be funded by Teck with the two remaining Milestone Payments being reduced by an amount equal to Copper Fox's pro rata share to a maximum of total Pre-Production Costs of C\$220M
- Copper Fox's pro rata share of any Pre-Production Costs more than C\$220M will be financed by Teck with an interest rate of Prime + 2%, without dilution to Copper Fox's 25% JV interest
- Teck finances Copper Fox's share of Capital Costs with an interest rate of Prime + 2%
- Capital Costs recovered by Teck from 90% of Free Cash Flow
- Remaining 10% of Free Cash Flow divided 75:25
- Right of First Offer (ROFO)

For full details refer to the Schaft Creek Joint Venture Agreement located on our website

Van Dyke Copper Project

Objective – Advance the project to the Pre-Feasibility Study stage



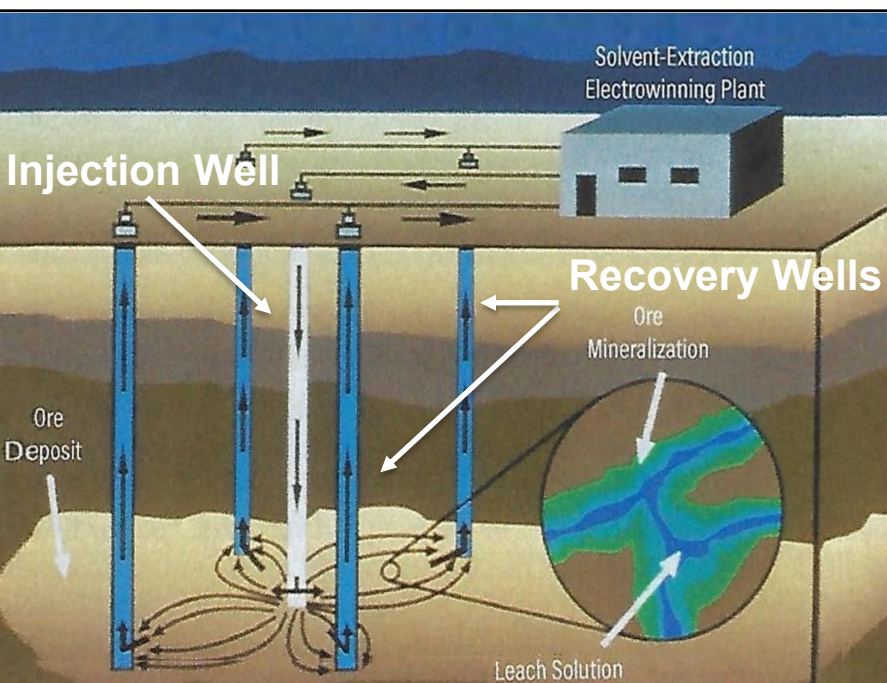
- 100% owned subject to NSR
- 2nd most advanced ISCR project in AZ
- Potential near term, mid-size, sustainable, environmentally friendly copper mine
- Strong project economics at US\$3.15/lb Cu
- Low Capital, C1 and AISC cost/lb Cu
- Production capacity of 85Mlb year of Grade A copper cathode for 17 years
- Excellent access and infrastructure with strong community support (2 LOI's signed)
- Significant resource expansion potential

1) The Technical Report, titled "NI 43-101 Preliminary Economic Assessment Technical Report for the Van Dyke Copper Project", with an effective date of December 30, 2020, was prepared by Susan C. Bird, MSc., P.Eng., Bob Lane, P.Geo., and Tracey Meintjes, P.Eng., of Moose Mountain Technical Services and Jim Norine, P.E., of Ausenco Limited.

In-Situ Copper Recovery (ISCR)

ISCR Advantages – it's not mining!

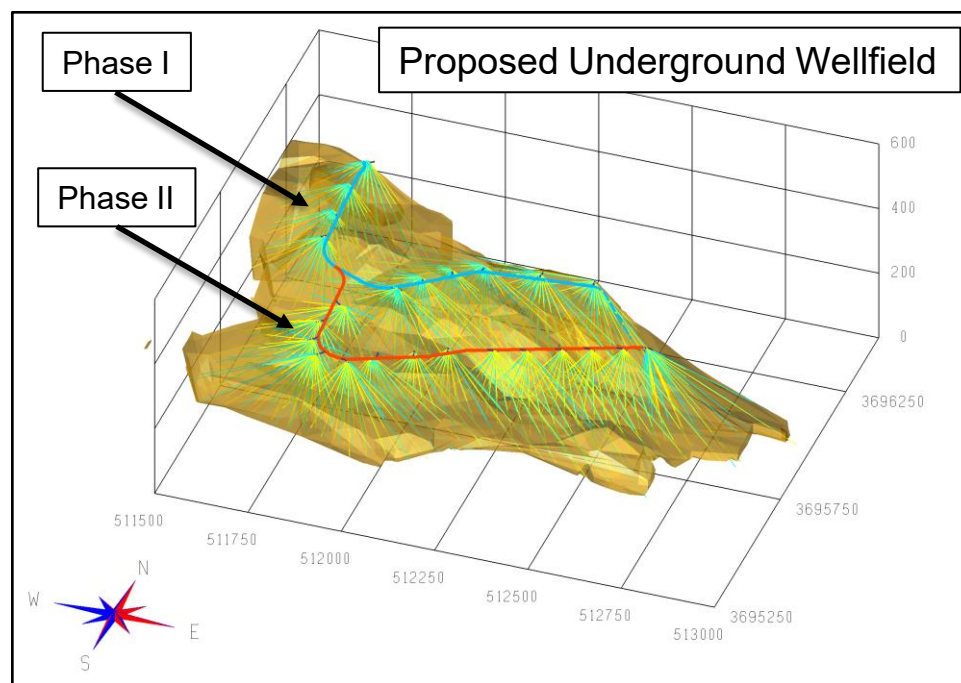
- Leaching, not mining, rock stays in place
- No open pit or tailings
- Lower energy consumption – 65% less
- Lower water consumption – 78% less
- Lower GHGs – 75% less
- Less social disturbance
- Small surface footprint



Source: In Situ Recovery & Remediation of Metals, Drummond Earley III

Van Dyke ISCR Advantages

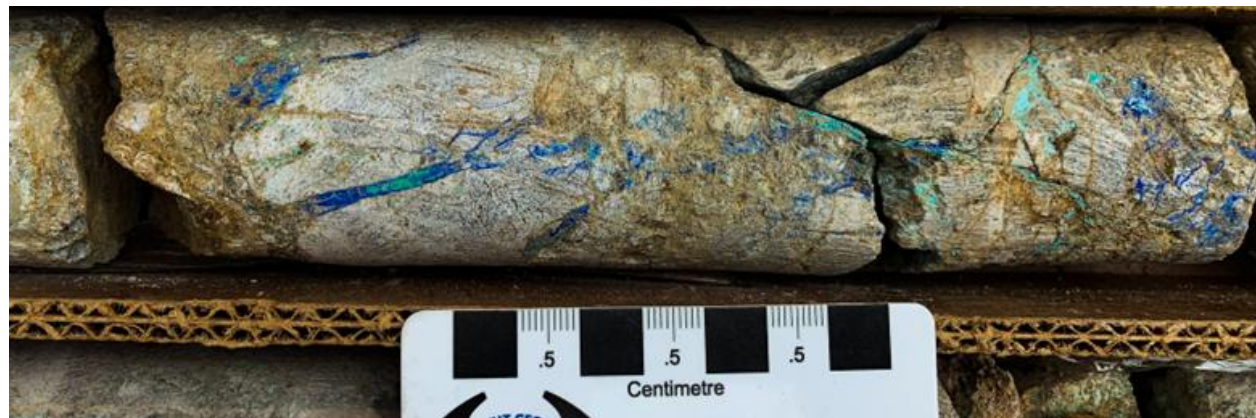
- Wellfield constructed underground, reduces environmental and social impact
- Underground workings below known aquifers
- Pinal Schist – simple geology
- Underground access, reduces future exploration costs



Van Dyke 2025 Activities



- Prepared PFS Execution Plan
- Completed Conceptual Hydrogeological Model
- Hydrogeological and water quality data collection
- Updated geological, mineralogical and geometallurgical modelling
- Finalized non-binding LOI's for waste rock removal and access to industrial water for leaching
- Stakeholder engagement – local communities within 40-mile radius



DDH M-3 294.5m, malachite, azurite and chrysocolla in fractured Pinal Schist

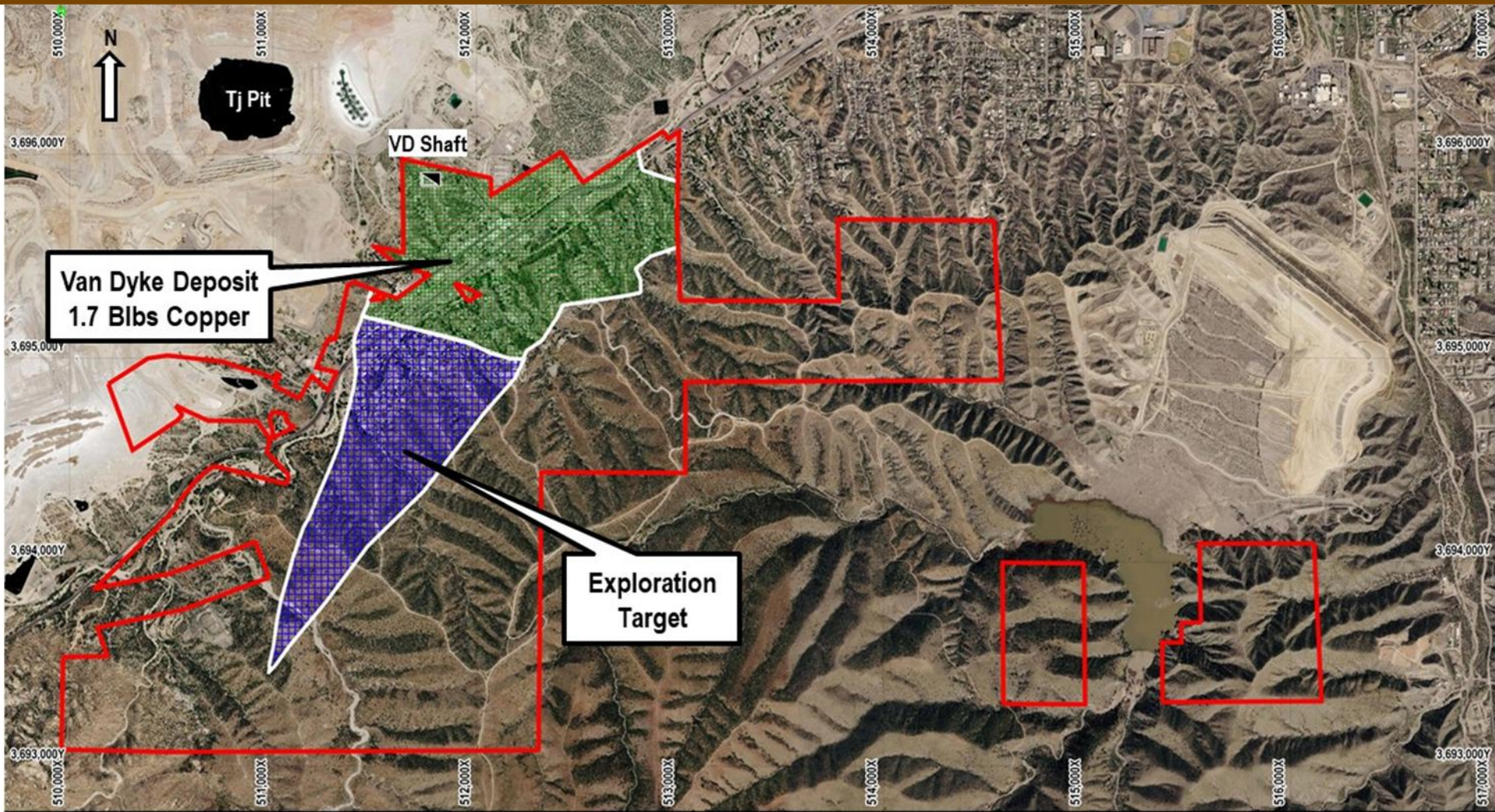
Van Dyke 2026 Program

- Updating PEA to determine project status
 - *Include results of technical studies completed since 2021*
 - *Update geological, structural, geometallurgical and hydrogeological modeling*
 - *Economic models to use current long term copper price*
 - *Update capital, operating and sustaining costs*
 - *Potential project optimization*
 - *Preliminary 3-D groundwater flow modelling*
 - *Update mineral resource estimate*
- Assess critical parameters to identify data gaps to plan future programs
- Establish permitting sequence in line with project activities
- Determine project readiness to advance to the PFS stage
- Expand hydrogeological and water quality sampling
- Stakeholder engagement

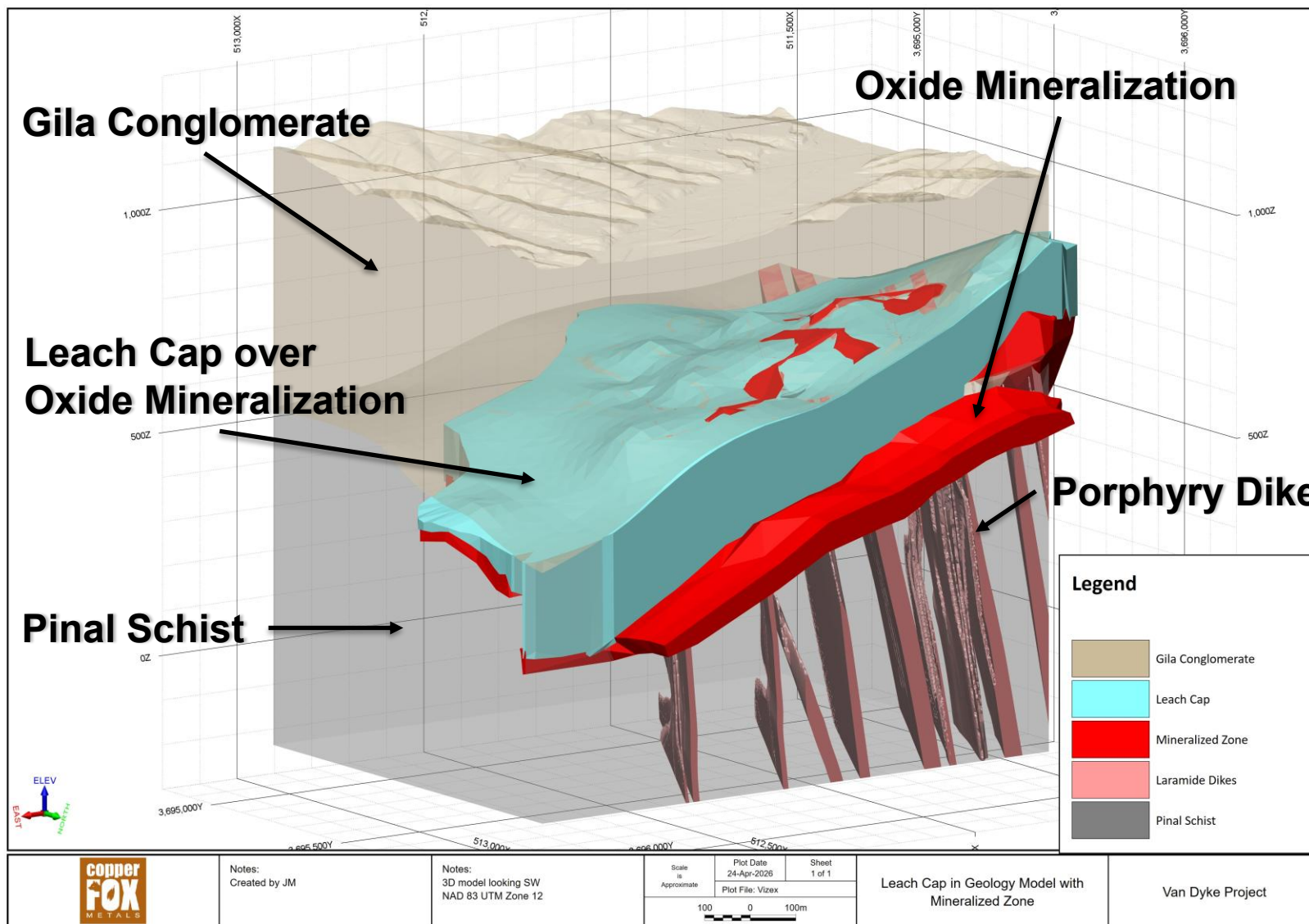


Core sample from DDH M-2 at the core interval of 284.45m showing fracture-controlled azurite (blue) and malachite (green) copper mineralization.

Deposit Outline and Resource Potential



Geological Model - Schematic



Production and Cost Summary	Units	2015 PEA	2020 PEA
Mine Life	years	11	17
Copper Production	Mlbs	456.9	1,101.0
Copper Price	US\$/lb	3.00	3.15
Gross Revenue	US\$M	1,370.0	3,468.3
• Total Cash Costs	US\$M	550.2	1,075.8
Total Cash Costs (\$/lb recovered Cu)	US\$/lb	1.20	0.98
C1 Cash Costs (\$/lb recovered Cu)	US\$/lb	1.08	0.86
Sustaining Costs (\$/lb recovered Cu)	US\$/lb	0.15	0.07
All In Sustaining Costs (AISC)	US\$/lb	1.36	1.14
Initial Capital Costs (incl. contingency)	US\$M	204.4	290.5
Taxes	US\$M	110.9	321.0
Cashflow Parameters and Outputs			
Discount Rate	%	8	7.5
Pre-Tax Net Free Cash Flow	US\$M	453	1,760
Pre-Tax NPV	US\$M	213	799
Pre-Tax IRR	%	35.5	48.4
Pre-Tax Payback	years	2.3	2.0
After-Tax Net Free Cash Flow	US\$M	342	1,440
After-Tax NPV	US\$M	150	645
After-Tax IRR	%	27.9	43.4
After-Tax Payback	years	2.9	2.1

Base Case 2020 PEA metal price sensitivity with all other PEA parameters remaining constant (Current LT copper price US\$4.50)

Metal Price (US\$/lb)	2.65	2.90	3.15	3.40	3.65
EBITDA (US\$B)	1.77	2.04	2.31	2.58	2.85
Free Cash Flow (after-tax US\$B)	1.05	1.25	1.44	1.63	1.82
NPV (after-tax US\$B)	0.45	0.55	0.65	0.74	0.83

Each **\$0.25/lb** increase in copper price
Increases EBITDA by **US\$270M**
Increases after-tax Free Cash Flow by **US\$190M**
Increases after-tax NPV by **US\$90M**

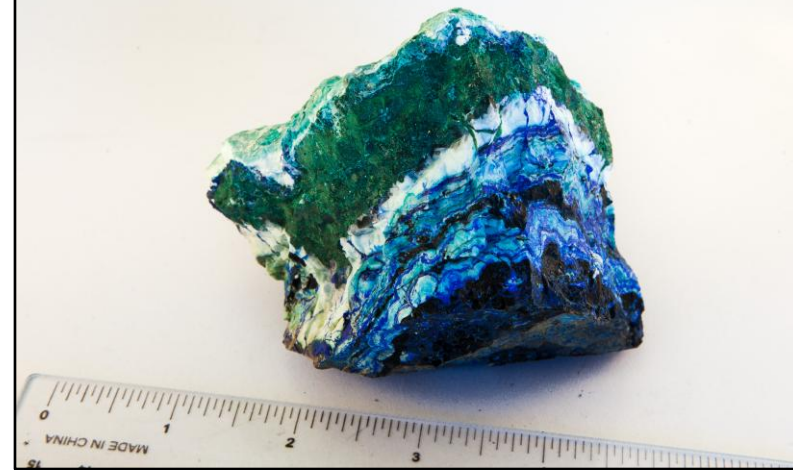


Malachite and Chrysocolla
DDH VD14-06 886.0' – 894.3'

Potential Socio-Economic Benefit

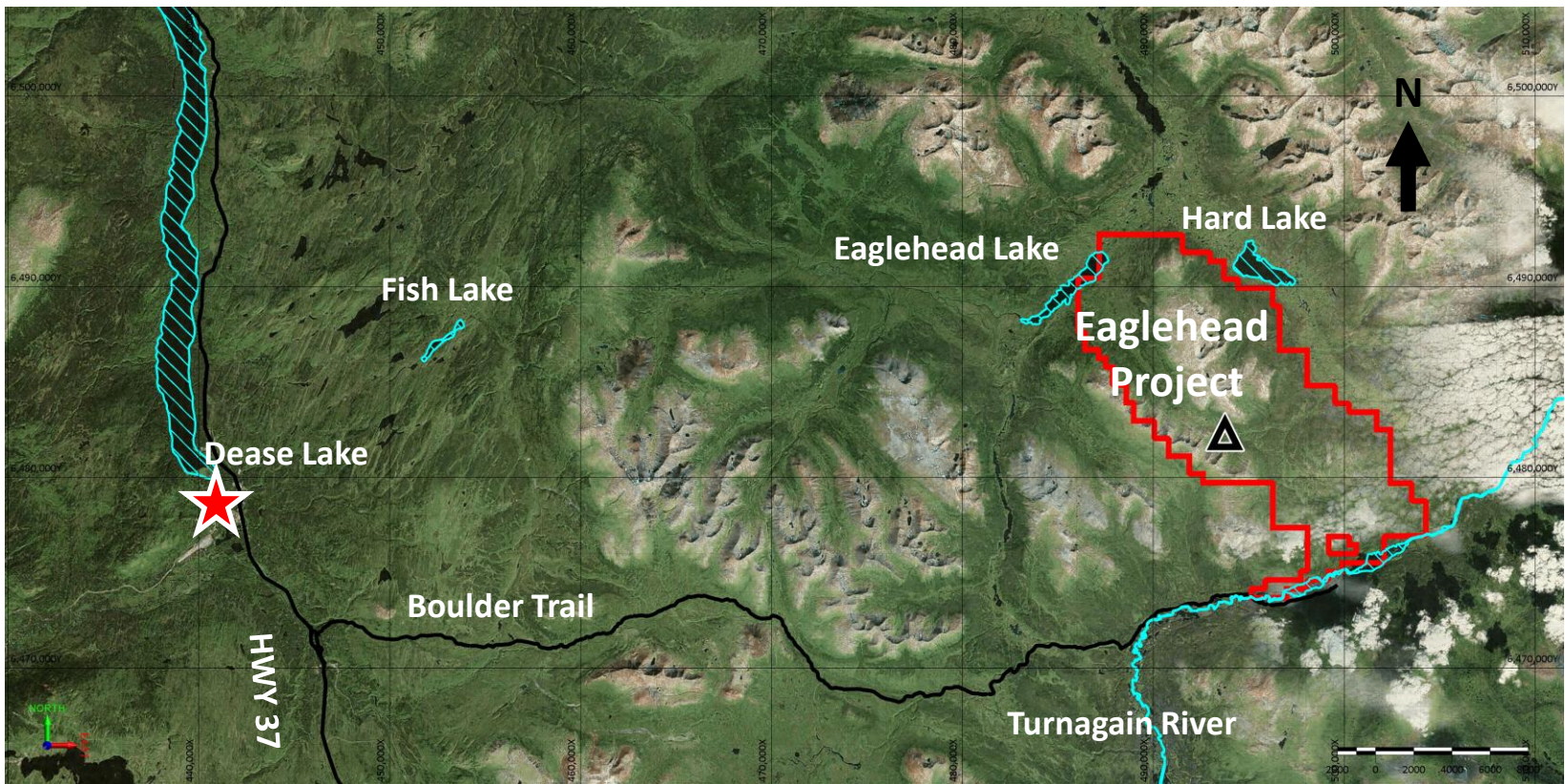
- 17-year mine life with significant resource expansion potential
- Job creation for Miami and surrounding area
 - Direct jobs – 134*
 - Indirect jobs – 402*
- Total operating costs of US\$1.07B, a large portion stays in the Miami-Globe area
- Severance Tax estimated at US\$24M
- Arizona State Tax estimated at US\$64M
- Federal Income Tax estimated at US\$257M

Copper mineralization 396 m level Van Dyke mine

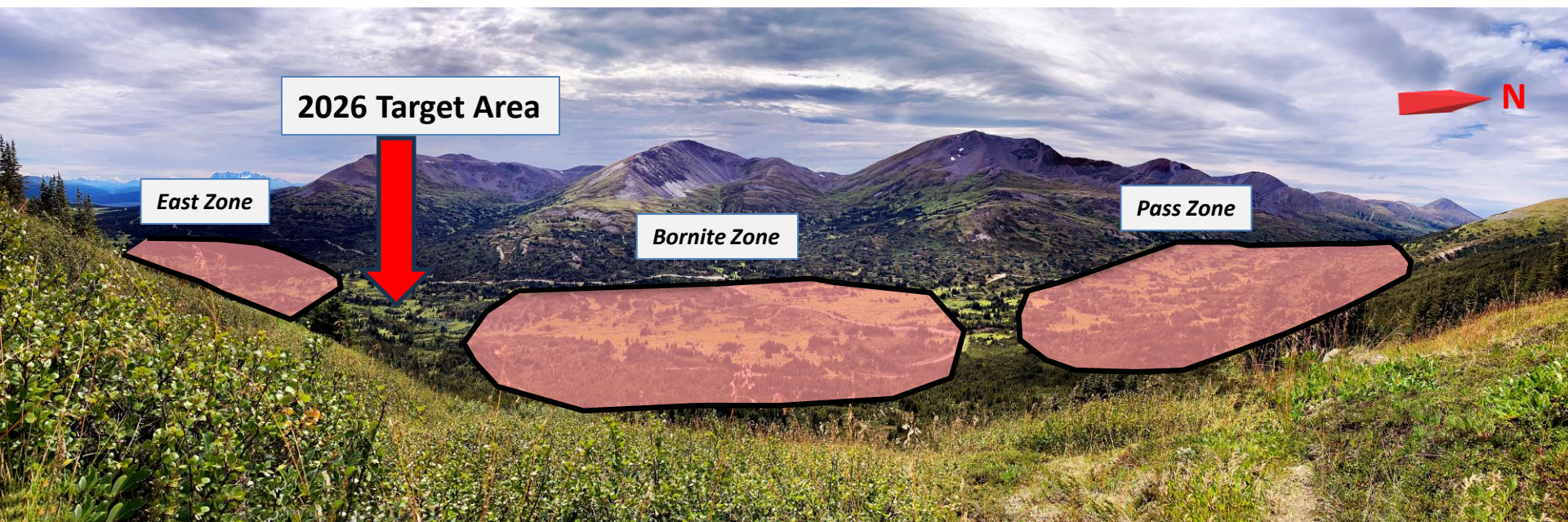


Eaglehead Project

- Resource stage porphyry copper system Cu-Mo-Au-Ag
- 100% owned subject to NSR encumbrances
- Located 50km east of Dease Lake, BC
- Covers 15,713ha (157km²) on south side of Eaglehead pluton
- Mining friendly jurisdiction with local community support

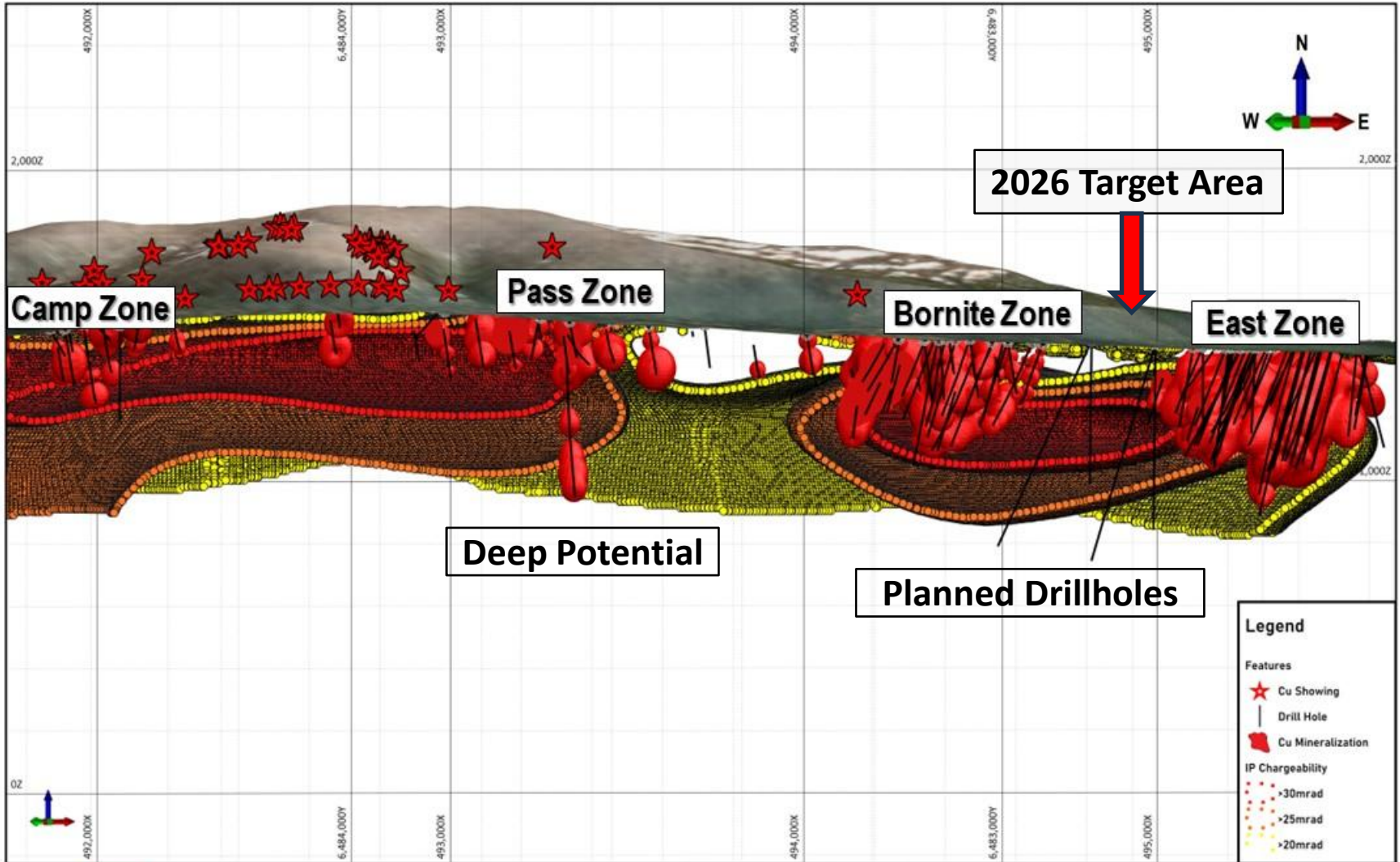


Topographic view and approximate location of mineralized zones – looking southwest



- Rolling topography at elevation ranges of 1,400 to 1,900 masl
- Significant resource expansion potential ~ 20% of 6km long porphyry target tested
- Metal grades comparable to other porphyry mines and deposits in BC
- Multiple mineralized intersections not included in MRE
- 89% Cu, 72% Mo, 79% Au and 78% Ag recoveries to rougher concentrate
- MYAB permit application under review with BC Ministry of Mines

Eaglehead Chargeability & Mineralization



Legend

Features

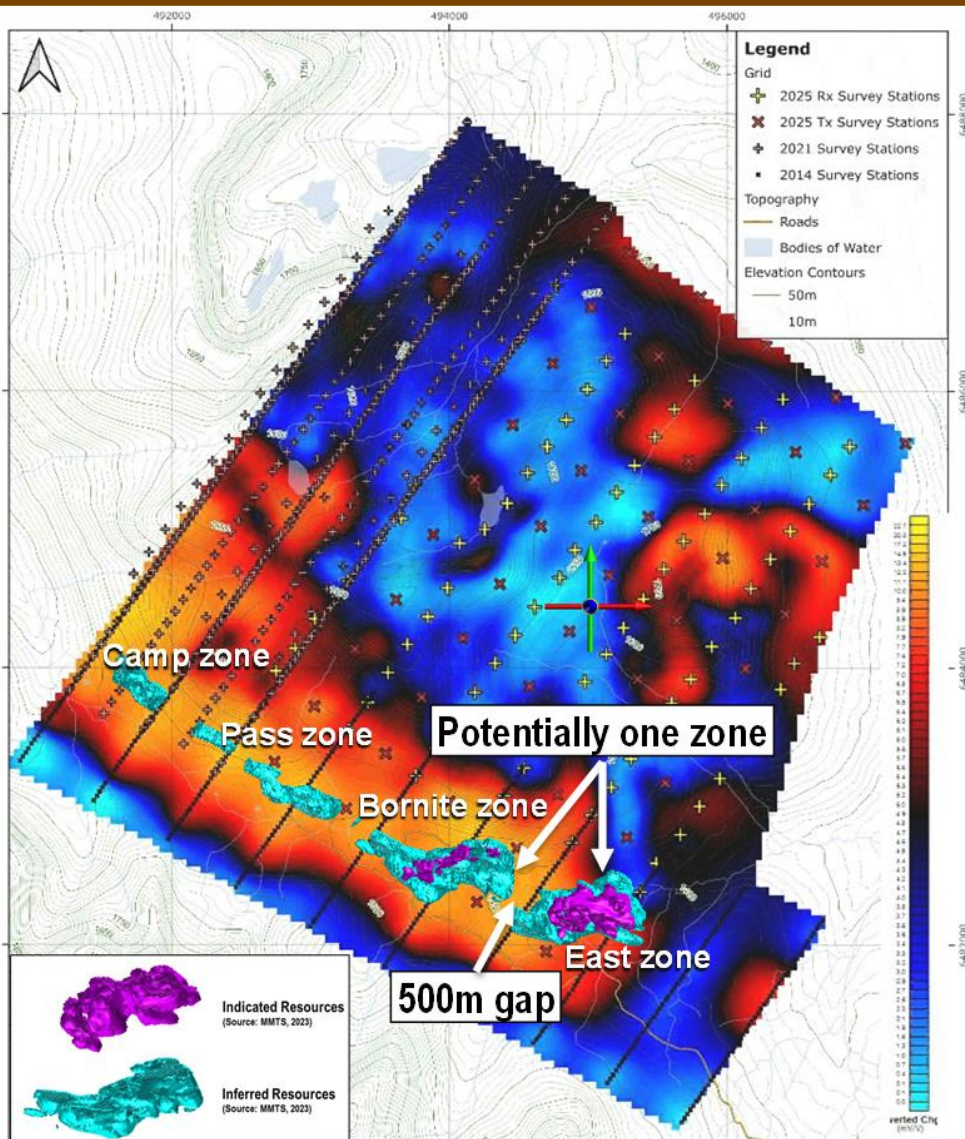
- ★ Cu Showing
- | Drill Hole
- Cu Mineralization

IP Chargeability

- >30mrad
- >25mrad
- >20mrad

	Notes: Created by JM	NAD 83 Zone 9N	Plot Date: 10-Oct-2024	Sheet: 1 of 1	Chargeability and Mineralization Looking Northeast	Eaglehead Project
			Scale: Approximate: 200 0 200m	Plot File: Viztek		

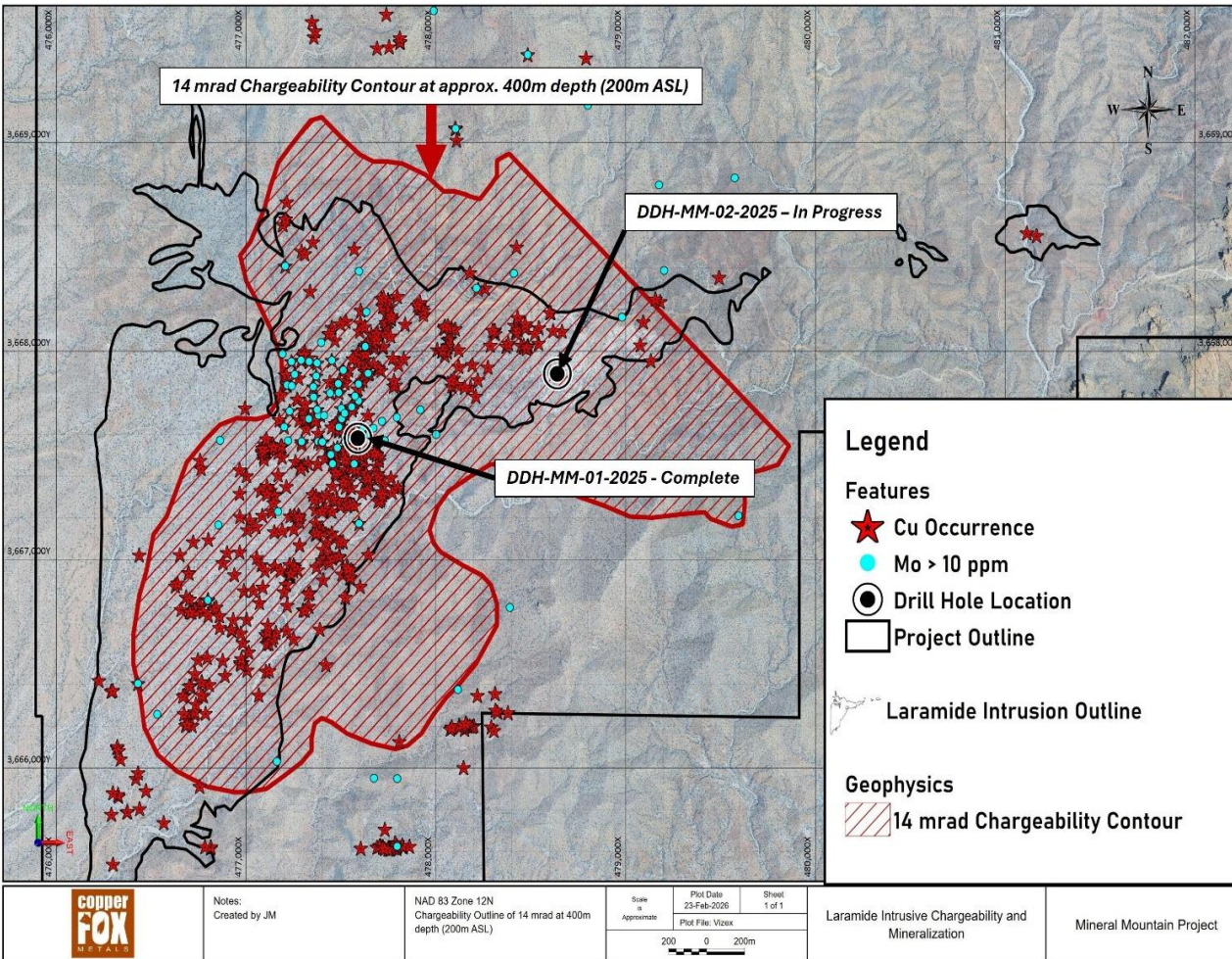
Eaglehead Expanded Chargeability Target



- 2025 significantly expanded chargeability signature
- Geometry of chargeability anomaly (> 7mv/s) defined
- Open-ended, NW trending 4,000m long x 2,000m wide NE dipping chargeability anomaly
- Substantial increase in potential size of porphyry target
- Strong correlation with geological and structural features, magmatic breccia pipes and porphyry mineralization
- Thibert Fault marks southern limit of anomalous chargeability

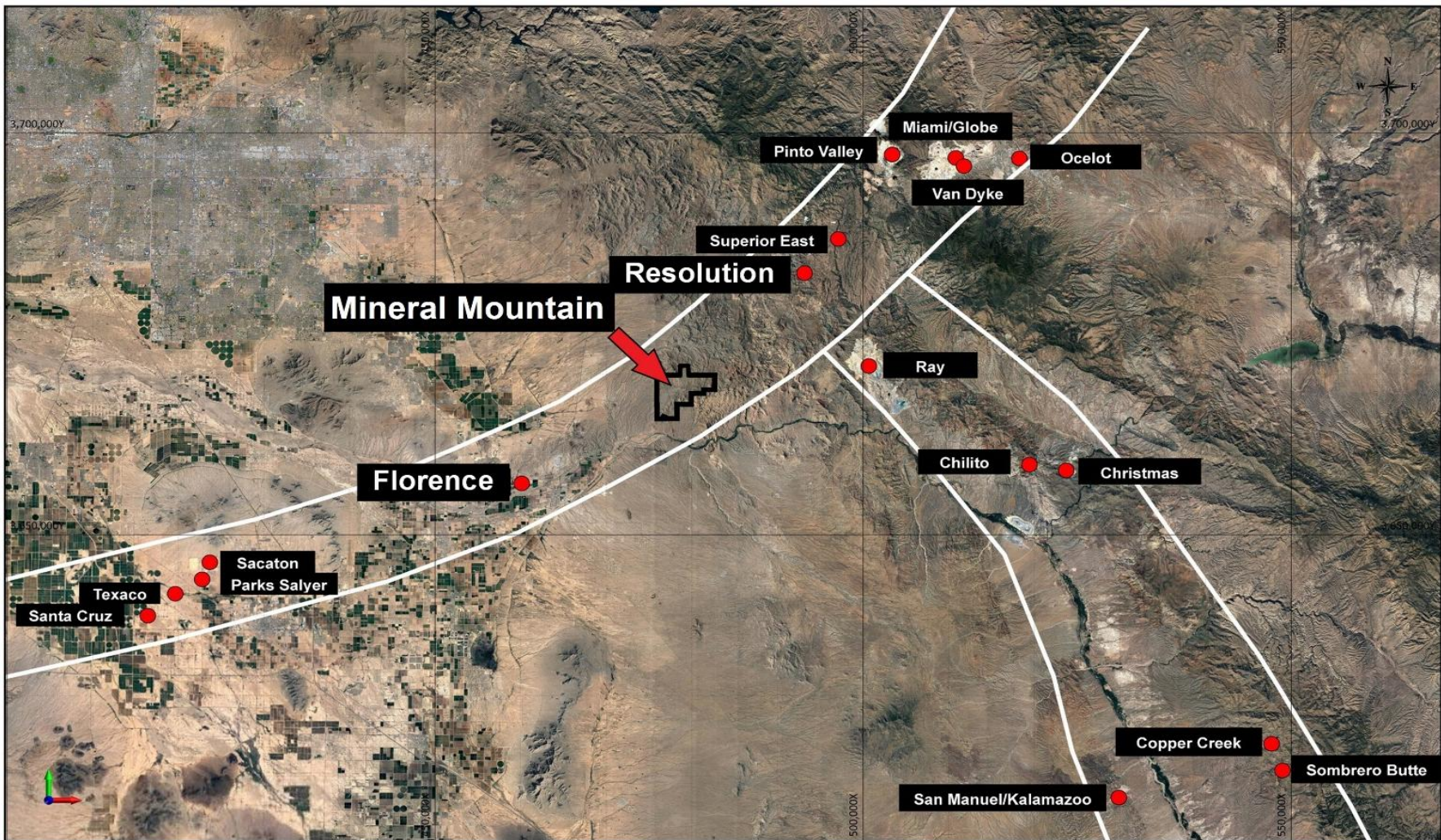
Merged anomalous chargeability from the 2014-2021-2025 geophysical surveys (at a depth slice of approximately 250m below surface) geophysical surveys

Mineral Mountain Project



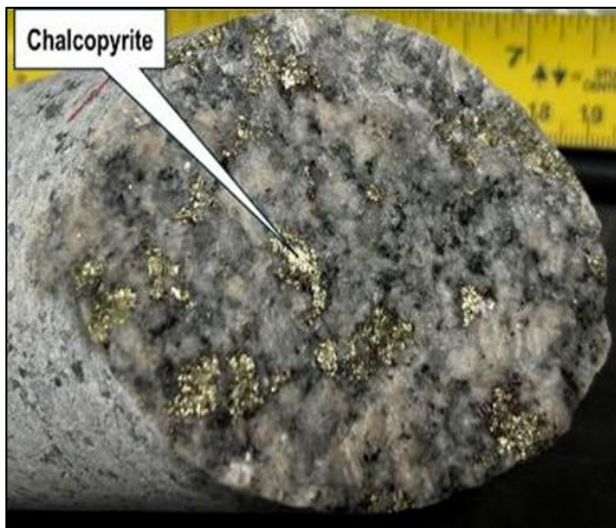
- Laramide age (67.4 Ma) porphyry copper target
- Located in Santa Cruz to Globe-Miami porphyry copper belt
- Maiden 2,500m drill program in progress
- Large porphyry footprint (4,500m by 2,000m)
- Open ended chargeability signature (>18mrad 3,200m by 1,200m)
- DDH MM-01-2025 intersected edge of porphyry copper system

Mineral Mountain Location

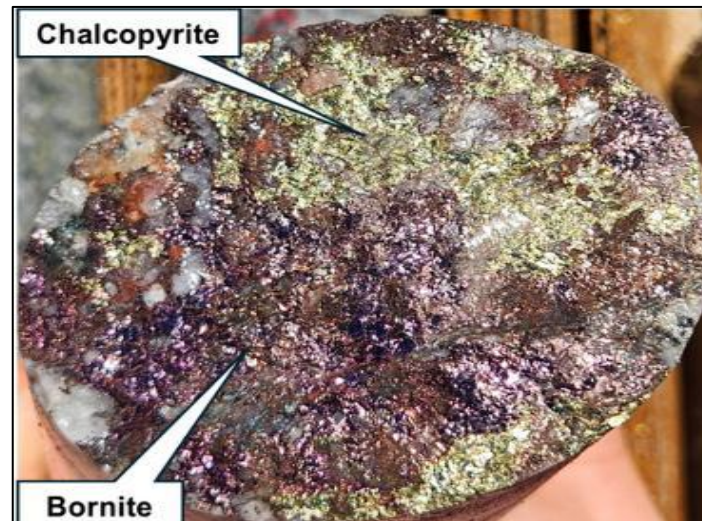


	Notes: Created by JM	NAD 83 Zone 12N Red dots describe the approximate location of some copper deposits in Arizona, USA.	Scale is Approximate	Plot Date 27-Nov-2023	Sheet 1 of 1	Copper Deposits in Arizona	Mineral Mountain Project
			Plot File: Vizex		5000 0 5000m		

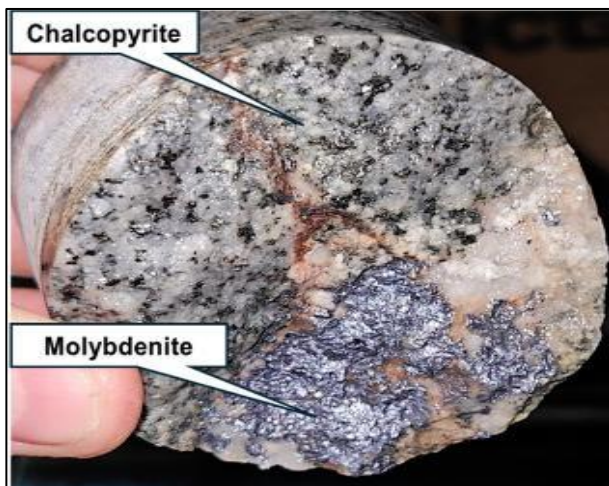
DDH MM-01-2025 Cu-Mo Mineralization



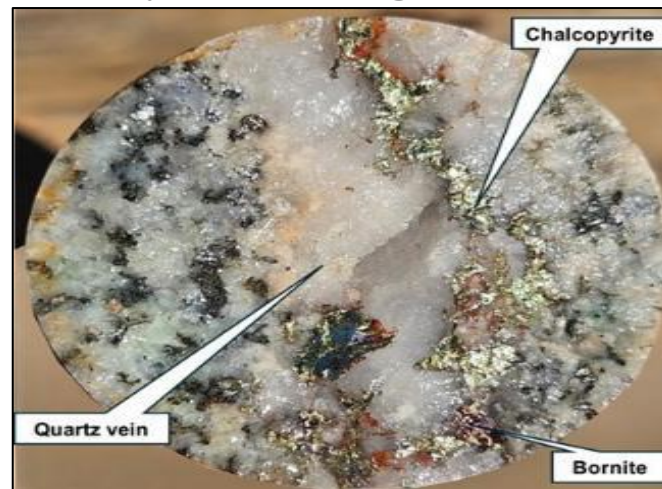
Qtz-cpy veinlet @ 88.30m



Qtz-cpy-bn veinlet @200.27m

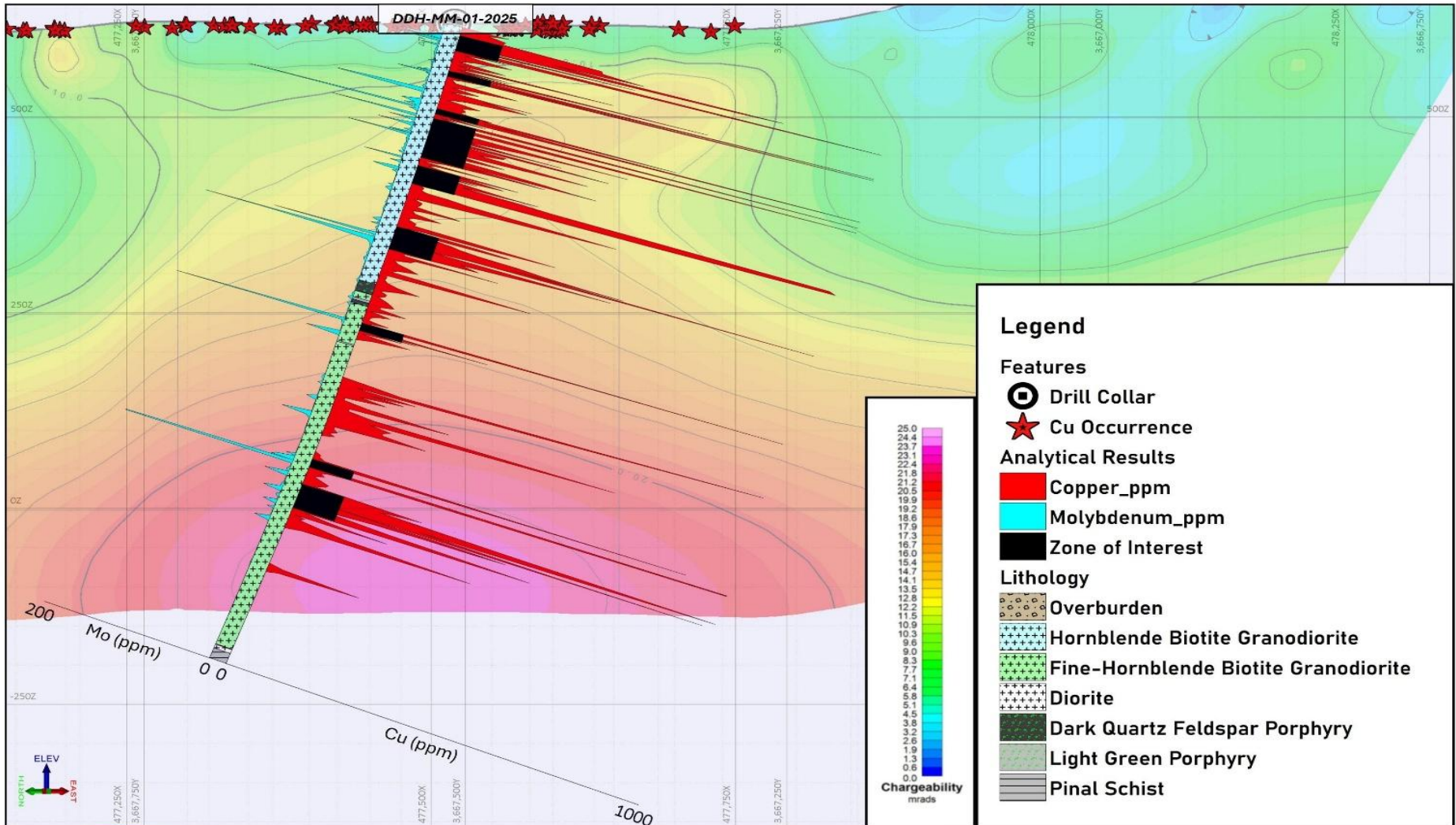


Qtz-mo veinlet @ 420.54m



Qtz-kspar-cpy-bn-mo veinlet @479.60m

Mineral Mountain Analytical Results



Legend

Features

- ⊙ Drill Collar
- ★ Cu Occurrence

Analytical Results

- Red bar: Copper_ppm
- Cyan bar: Molybdenum_ppm
- Black bar: Zone of Interest

Lithology

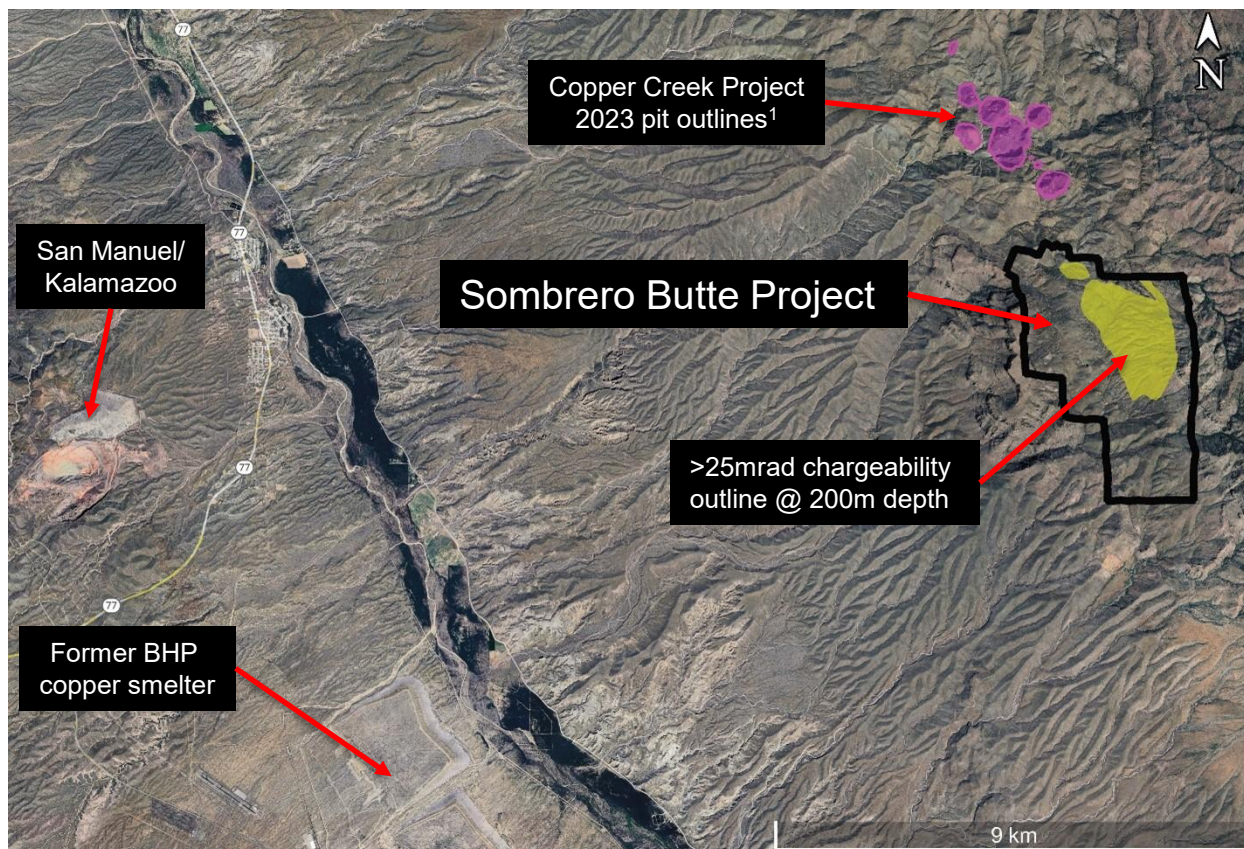
- Overburden
- Hornblende Biotite Granodiorite
- Fine-Hornblende Biotite Granodiorite
- Diorite
- Dark Quartz Feldspar Porphyry
- Light Green Porphyry
- Pinal Schist

Chargeability mrad

25.0
24.4
23.7
23.1
22.4
22.4
21.8
21.2
20.5
19.9
19.2
18.6
17.9
17.3
16.7
16.0
15.4
14.7
14.1
13.5
12.8
12.2
11.5
10.9
10.3
9.6
9.0
8.3
7.7
7.1
6.4
5.8
5.1
4.5
3.8
3.2
2.6
1.9
1.3
0.6
0.0

	Notes: Coordinate Projection - UTM NAD83 Zone 12N.	Notes: Created by JM	Scale is Approximate	Plot Date 25-Mar-2026	Sheet 1 of 1	Mineralization Cross-Section with Analytical Results	Mineral Mountain Project
			100 0 100m	Plot File: Vizex			

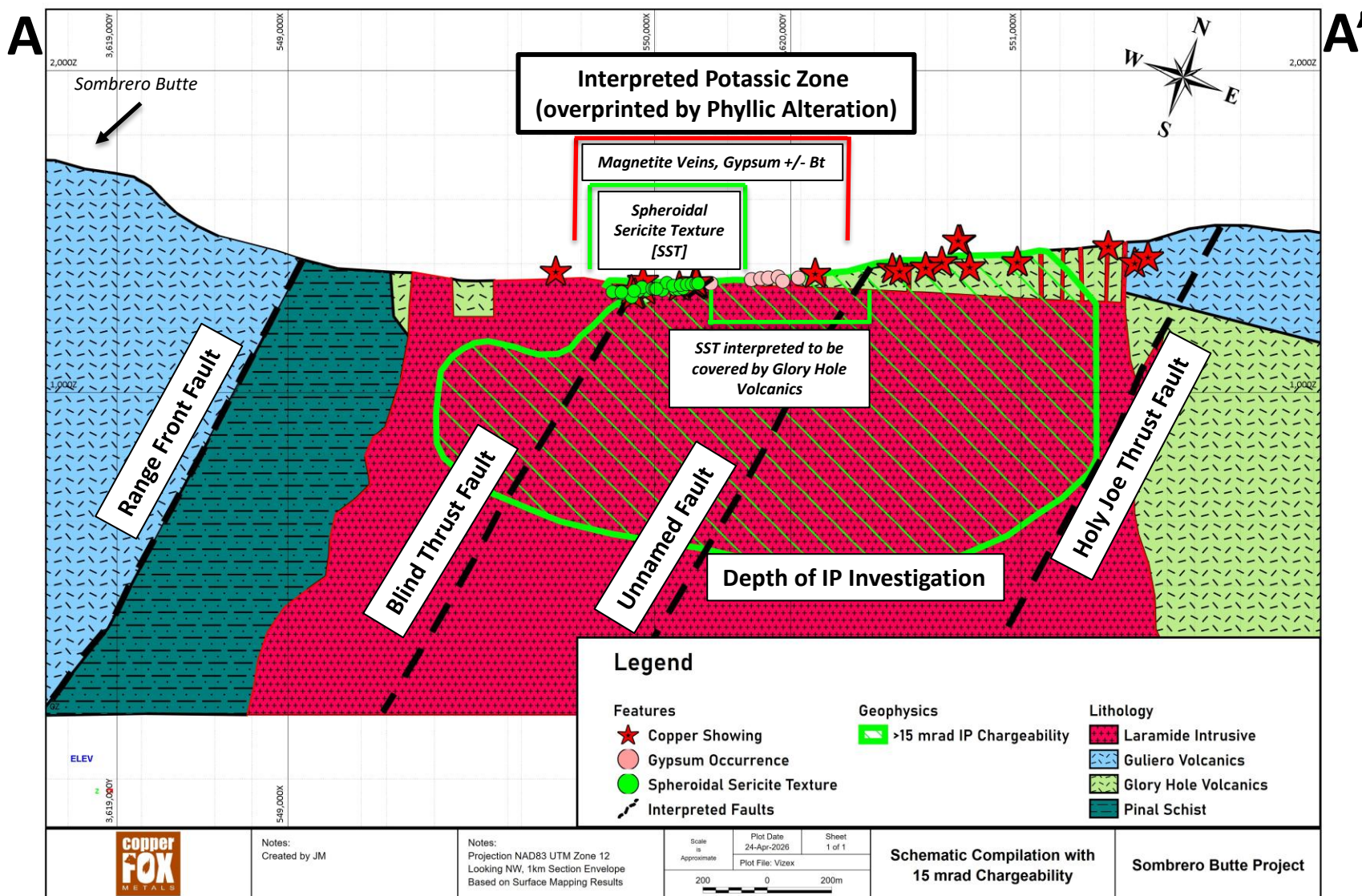
Sombrero Butte Project



- Drill permitting planned in 2026
- Large Laramide age porphyry copper exploration target,
- Located on projected ENE trending copper belt (San Manuel/Kalamazoo, Safford, Morenci)
- 3,200m long by 1,300m wide chargeability anomaly >25mrad
- Multiple mineralized magmatic-hydrothermal breccia pipe swarms
- Historical drilling testing mineralized breccia pipes
- DDH SB-07-14 intersected 1.16% Cu over an 86m core interval starting at surface

1) Source for Copper Creek Project 2023 Pit Outlines: Copper Creek Project, NI 43-101 Technical Report and Preliminary Economic Assessment. Pg 213. Ausenco and SRK, May 3rd, 2023.

Sombrero Butte Exploration Model



Corporate Information



Corporate Office

Suite 650, 340 – 12 Ave SW
Calgary, AB T2R 1L5
Canada

Desert Fox Office

3445 E Highway 60
Miami, AZ 85539-1353
USA

Investor Relations

1-844-464-2820 or
1-403-264-2820

investor@copperfoxmetals.com
www.copperfoxmetals.com